

Campus-Wide Earthquake Response Drill

October 28th (Wed), 11:00-

Objectives & Requests

Students and staff will conduct training on response actions considering that a strong earthquake occurs during the daytime on weekdays. In this training, we are going to broadcast the Earthquake Early Warning (EEW) to notify the occurrence of an earthquake and instruct to take actions to ensure safety at the location. **If a big earthquake actually occurs, take the following four actions. In this training, we will not evacuate to the outdoors shown in Nos. 2 and 3. Wear a mask to prevent infections.**

① Earthquake Early Warning Broadcast and Safety Actions

3-step Safety Actions



Drills with these three safety steps have been conducted in the world and also in Japan. Please take the appropriate action without hesitation.

Safety actions will differ depending on where you are, for example: If you are in a classroom, you will typically cover your head under a study desk while holding the desk so it doesn't move. (See picture on left.)

If you are in a laboratory where there may be chemicals or other potentially harmful substances, you should move to a safer place in the laboratory or go out to hallway and take shelter in a safe place.

This drill assumes that an earthquake shaking will begin about 10 seconds after the Earthquake Early Warning (EEW) and that intense shaking will continue for 2 minutes. Imagine the ground is shaking and take the necessary safety actions during this time.

② Evacuate to Safe area

Not included in 2020 drill

Once the shaking subsides, follow the instructions of your instructor and evacuate the building in an orderly manner. There is no need to hurry. Take your valuables when evacuating during the drill. Primary evacuation areas and evacuation routes are designated for each building. If you encounter staff on the evacuation route, please follow their instructions.

③ Evacuee Safety Confirmation

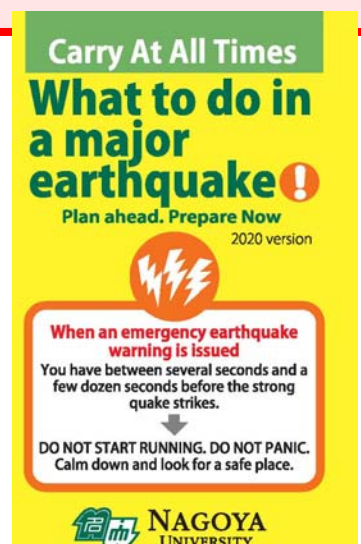
On reaching the evacuation area, please hand in the Evacuee Confirmation Card to the staff of each building. There are 2 Evacuee Safety Confirmation Cards in the yellow pamphlet shown below. One for use in actual emergencies, and the other for use during drills. For this drill, please cut-out and use the Evacuee Safety Confirmation Card labeled "For use during drill".

④ Safety Confirmation System Drill

A safety confirmation request will be sent to your registered email addresses of mobile phones.

Those who have completed the "Yearly Information Security Check" are registered. When you get safety confirmation request email, please access the URL for "Safety Confirmation System" provided in the email and select your safety status.

**Deadline for Safety Confirmation input is
October 30 (Fri) 17:00**



Actions during and after intense earthquakes

In case of a big earthquake, like the expected Nankai Trough Intense Earthquake, the safety actions to take depend on the earthquake magnitude as well as the time it occurs. If a big earthquake occurs on a weekday during the daytime, the following are the general steps to take.

Protect yourself from earthquake shaking

Evacuate to primary evacuation areas

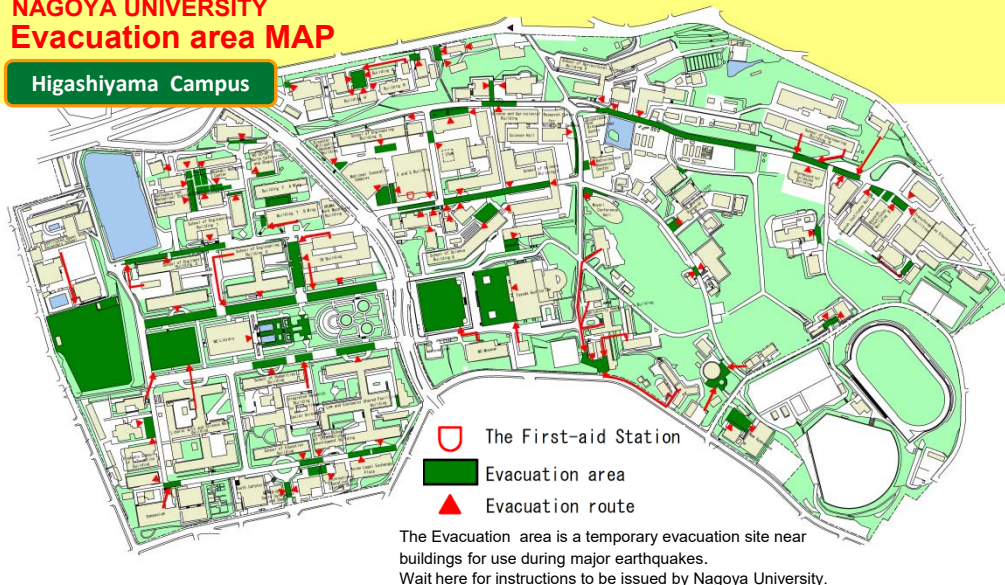
Wait inside buildings whose safety has been confirmed

Deciding to go home, confirm the damage around your home, transportation and essential facilities.

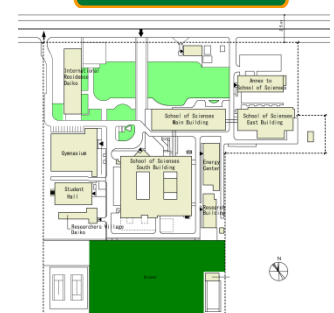
If the house is badly damaged, go to the designated evacuation facilities of your neighborhood.

NAGOYA UNIVERSITY Evacuation area MAP

Higashiyama Campus



Tsurumai Campus



Daiko Campus

Helpful information in an emergency

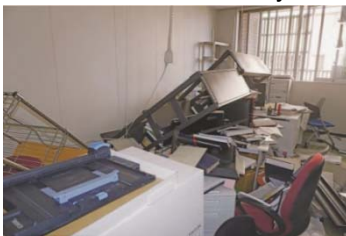
Emergency message hotline:171 Dial 171 from a cell phone or public phone for the emergency message hotline.

Twitter Collect disaster information tweets from the Meteorological Agency, fire department headquarter, the Municipal government ,and other officials.

Rajiru★Rajiru, radio .jp Smart phone app for online radio broadcasting

Safety of your home and University route

Fasten any heavy and large furniture in your room.
Check for hazards on your route to the university .



Bookshelves loaded with over 200kg of books present a dangerous falling hazard.



During the Osaka Northern earthquake of 2018, people lost their lives due to falling block walls. Check for hazards, like old retaining walls and block walls on your route to the university .

Nankai Trough Earthquake Extraordinary Information

When extraordinary information related to the possible occurrence of the Nankai Trough Huge Earthquake is announced, collect information on your own, protect yourself and follow instructions from the university. The response rule of society for large earthquake will be issued by the government and local municipalities in the case. Also check Nagoya University website for classes and university activities.

Nagoya University Disaster Prevention & Preparedness Headquarters
Contact: Disaster Management Office (Ext: 6040)